

Stainless Steel Outdoor Drinking Fountain

An Outdoor Drinking Fountain Built to Last

Tubular/Canister Style Order/Specify As.



CHBFPD A Series

Designed with Durability in Mind:

- Built to last & will suit any outdoor environment
- Heavy duty polished stainless steel
- Designed to withstand vandal attacks
- Sleek luster-like finish
- Easy access stainless steel side cover plate
- Vandal resistant fasteners on cover plate
- Shallow basin for easy clean & sanitary purposes

Ideal for Areas Where Vandalism May Occur:

- School Playgrounds & Courtyards
- Sport & Recreational Parks
- Neighbourhood Playgrounds & Skate Parks
- Reserves & Walkways
- Shopping Malls
- Transport Hubs & Wharves
- Golf Courses



Optional Extras:

- Side-mounted Push Bottle Filler
Order as: CHBFPD A-BF
- In-line Water Purifier
Order as: CHBFPD A-WP



Unit 9, 114 Wiri Station Road, Wiri, Auckland, New Zealand 2104
Phone: (09) 275-5019 | Email: sales@aquago-chemchek.com
www.aquago-chemchek.com or www.aquagowater.co.nz

Stainless Steel Outdoor Drinking Fountain

Tubular/Canister Style Drinking Fountain Specifications



CHBFPD A Series

240mm DIAMETER



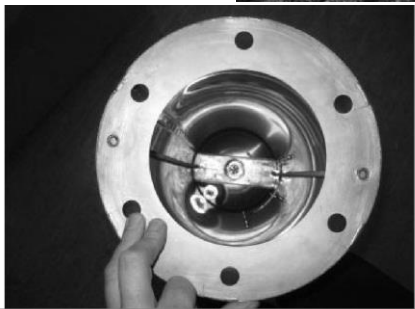
PUSH BUTTON AUTO SHUT-OFF BUBBLER. BUILT IN FREEZE RESISTANT NYLON REGULATOR CARTRIDGE. FLOW ADJUSTABLE

STAINLESS STEEL CAP & BOWL ASSEMBLY WITH INTEGRAL DRAIN & 40mm S-TRAP FOR WASTE (S-TRAP NOT INCLUDED)

SPIRAL WELD STAINLESS STEEL PIPE SUPPORT
240mm ID x 1.5 mm

STAINLESS STEEL EASY-ACCESS PANEL
192mm W X 200mm H

900mm HEIGHT



INTERNAL VIEW. Fig 1.



INTERNAL VIEW. Fig 2.



TOP VIEW. Fig 3.

